



l ā b r i c a

Vol. 1

made in
GUATEMALA



lābrica

THE WAYS
WE READ DESIGN

Our story

Lābrica was an idea and a dream that began ten years ago by Lorena Velasquez, Ricardo Velasquez and Lorena Vasquez. This idea became a reality in 2012 driven by Lorena's strong business background and Ricardo's design experience.

Labrica's missing link to this adventure was the gifted artisans needed to make the designs a reality.

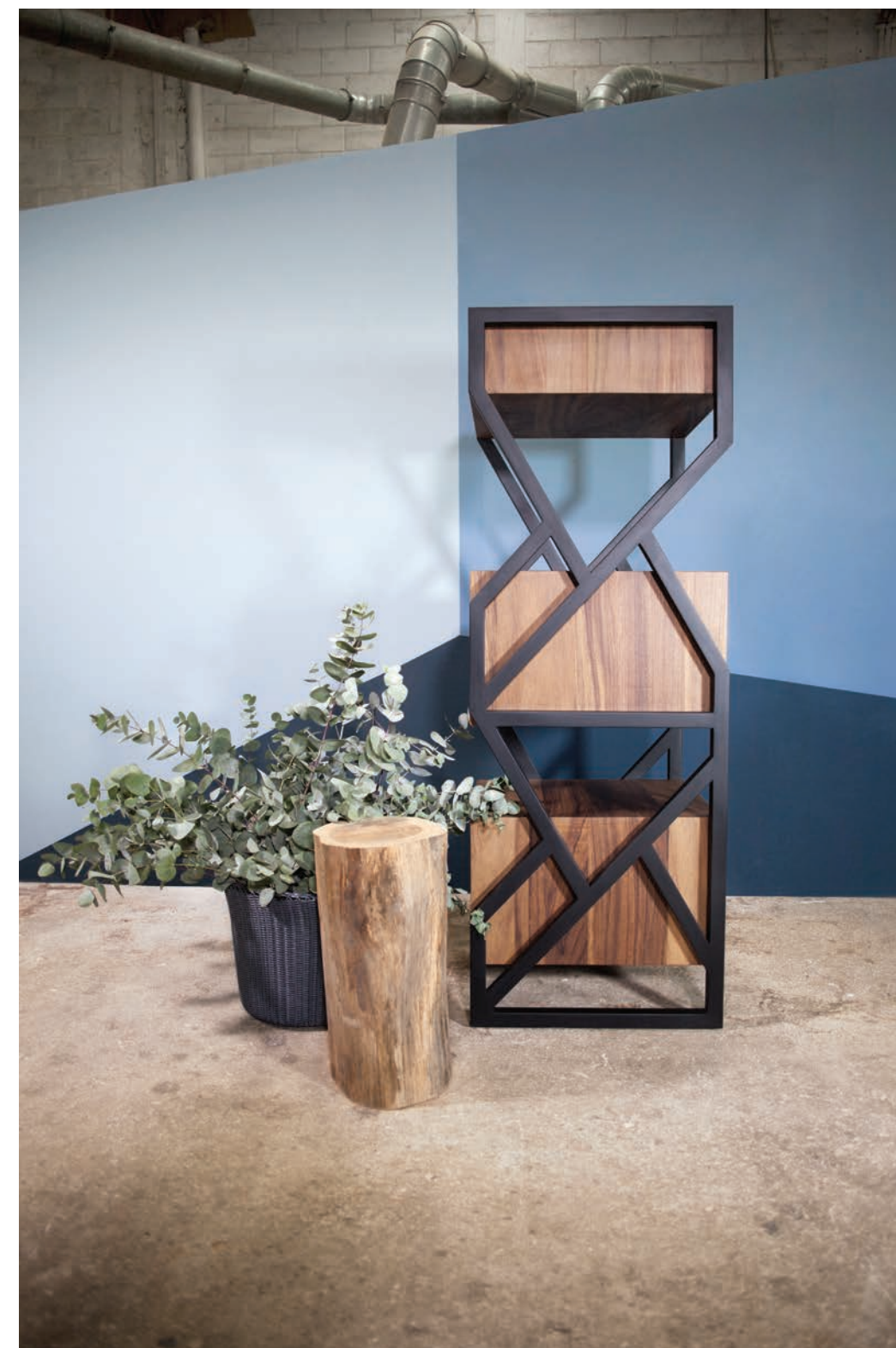
Milpas Altas, a small town near Antigua Guatemala, has a long tradition of woodworking and is where most of Lābrica's artisans come from.





INDEX

Levita Chest
Levita Desk
Boton Tables
Capirucho Table and Stool
Baston Chair
Maso Chair
Bodega Console
DD Console







The concept that inspired the levita chest is to make it appear that it is levitating. The drawers are delicately supported by a structure inspired by the geometric traditional patterns found in indigenous Guatemalan textiles.



LEVITA DESK

Inspired by the patterns found in traditional
Guatemalan textiles.







The concept that inspired the levita desk is to make it appear that it is levitating. The drawers are delicately supported by a structure inspired by the geometric traditional patterns found in indigenous Guatemalan textiles.

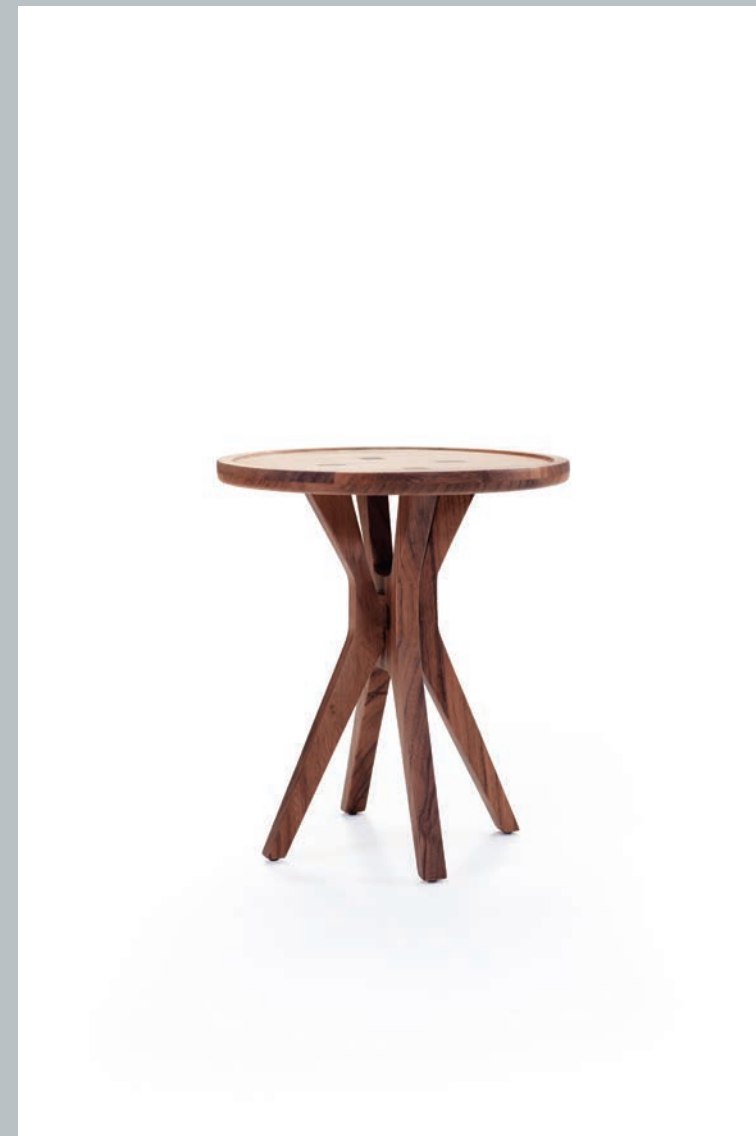
BOTON TABLES

Three tables inspired by old brass buttons and cuff links.











Inspired by old brass buttons and cuff links, this series includes three different table tops each with a distinct base. The series continues to grow and each piece can be modified to be a coffee table or dining table. Each boton table is made with either matilisguate, palo blanco or conacaste.



CAPIRUCHO TABLE AND STOOL

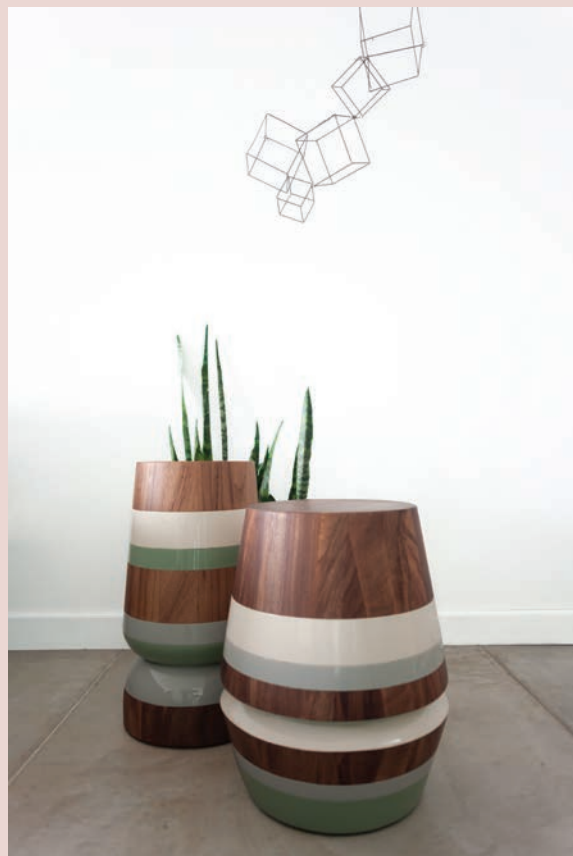
Inspired by a popular toy enjoyed for many generations by kids in Guatemala.







The capirucho side table and stool are inspired by a popular yet simple toy enjoyed for many generations by kids in Guatemala. The piece has a playful silhouette turned with either matilisguate, palo blanco or conacaste, and it can be accentuated with colorful bands creating a more fun look that represents the original capirucho toy.



BASTON CHAIR

Inspired by a gentleman's cane.



Using a gentleman's cane as inspiration, the baston chair integrates soft curves to the simple silhouette creating a feeling of movement and strength. The chair can be made with either matilisguate, palo blanco or conacaste.



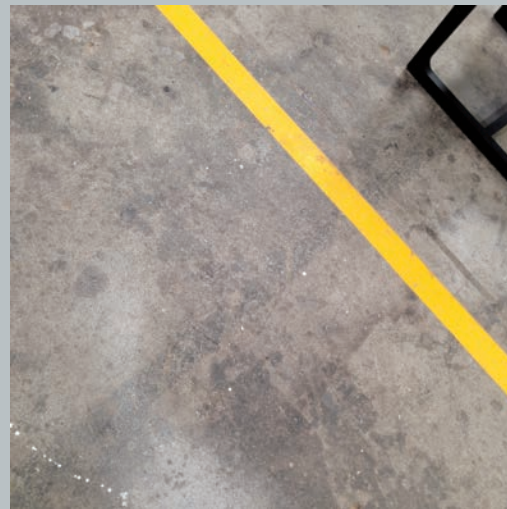




MASO CHAIR

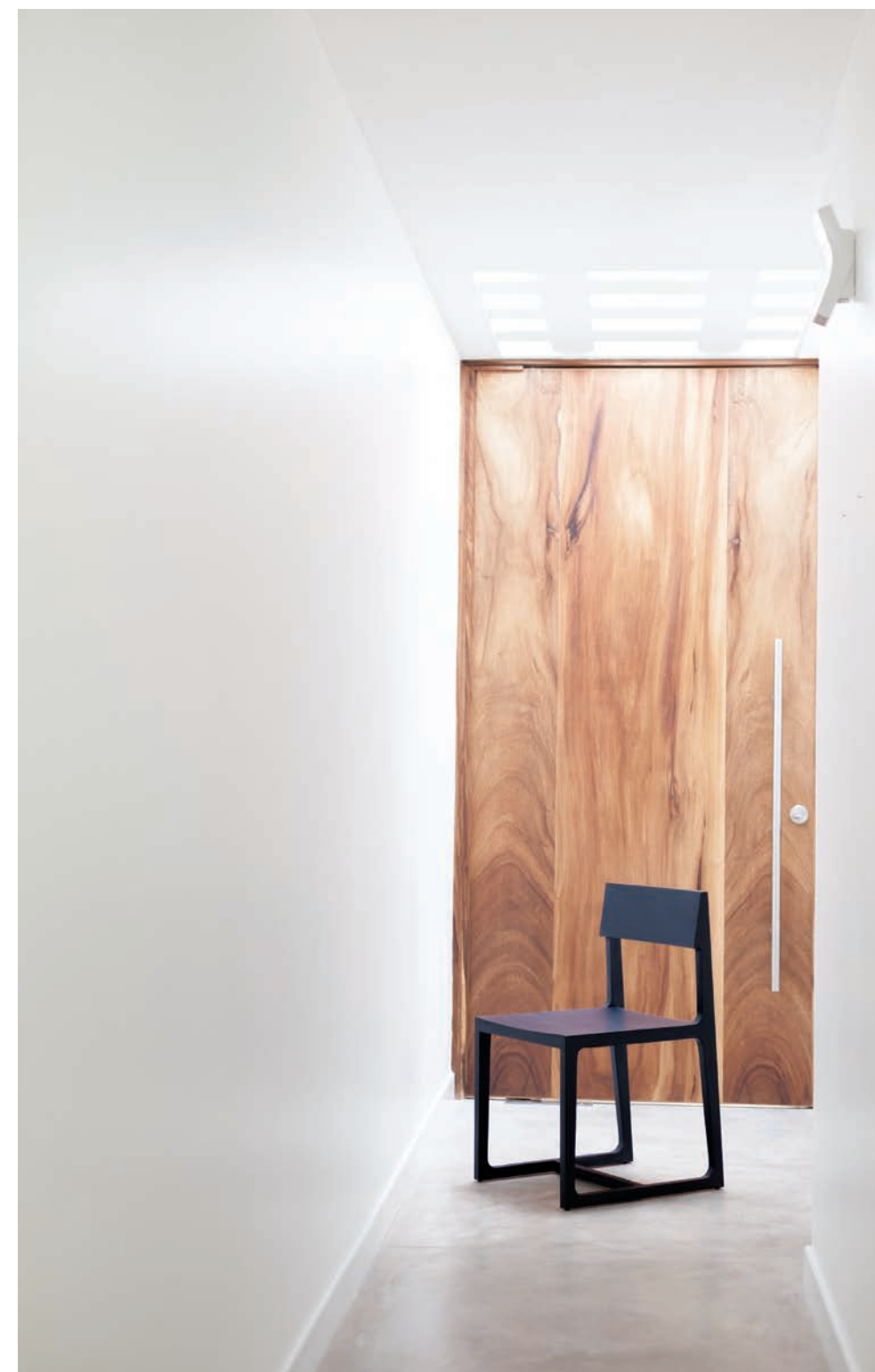
Simple lines highlight the beauty of the wood.







The maso chair was originally designed for a restaurant in Miami Beach. It is visually light and easy to incorporate within different spaces. The simple lines highlight the beauty of the wood used which can be either matilisguate, palo banco or conacaste.



BODEGA CONSOLE

Inspired by storage buildings and warehouses known in Spanish as “bodegas”.





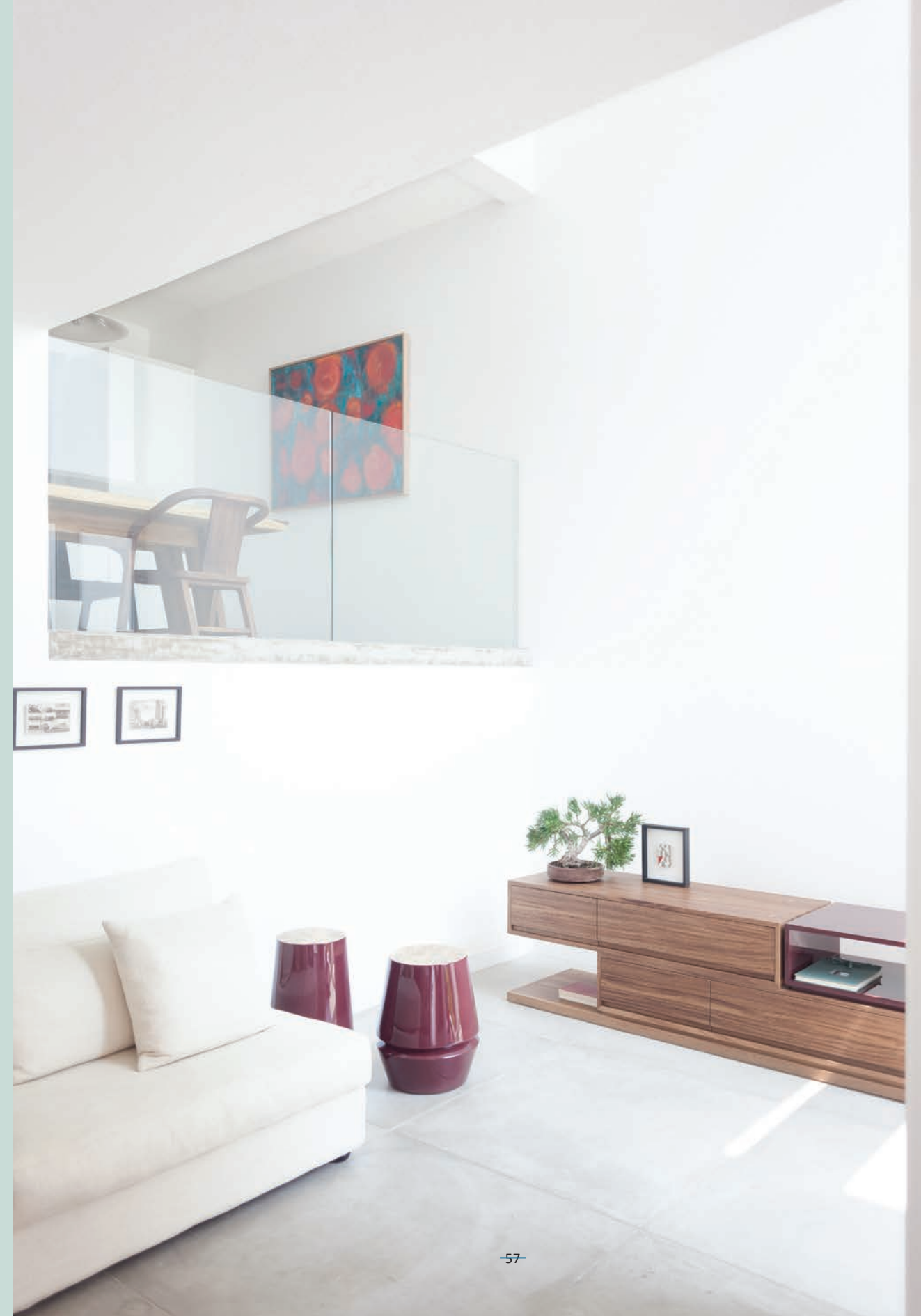
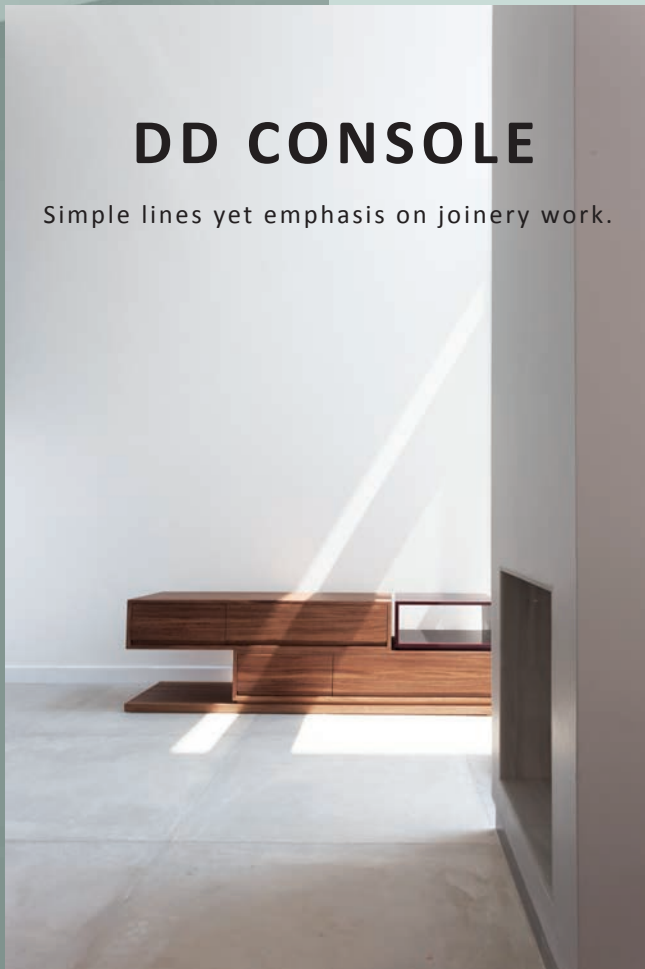
The bodega console was inspired by the simple lines and shapes of storage buildings or warehouses know in Spanish as "bodegas". The piece consists of a structural frame that encases three individual storage modules. The bodega console is made with either matilsguate, palo banco or conacaste.





DD CONSOLE

Simple lines yet emphasis on joinery work.







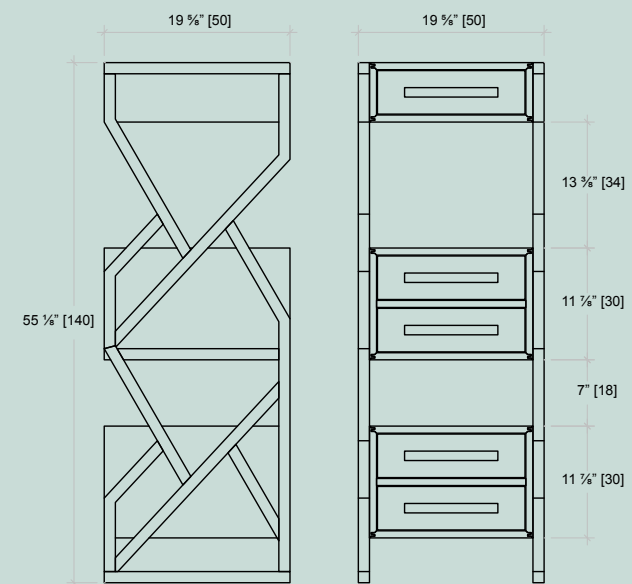
The dd console consists of a series of stacked blocks that create storage spaces. The console has simple lines yet there is a lot of emphasis on joinery work, creating a distinct pattern the moment the boards are assembled. The dd console is made with either matilisguate, palo banco or conacaste.



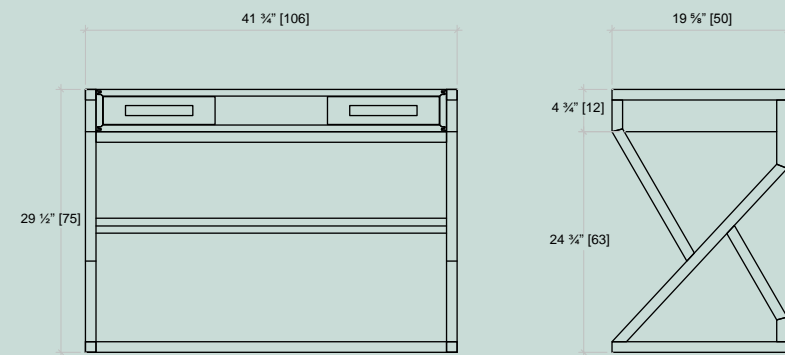


TECHNICAL DRAWINGS

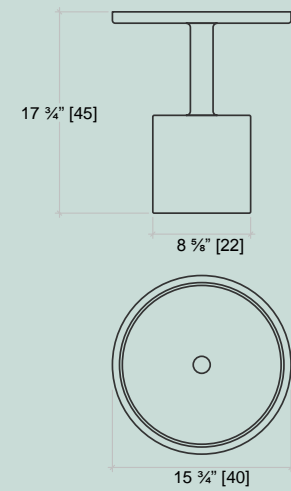
LEVITA CHEST



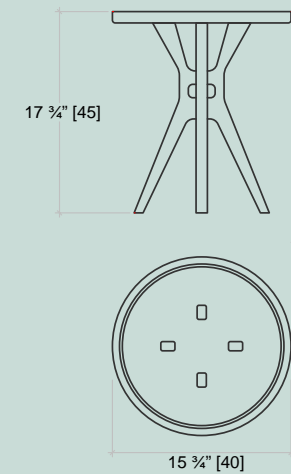
LEVITA DESK



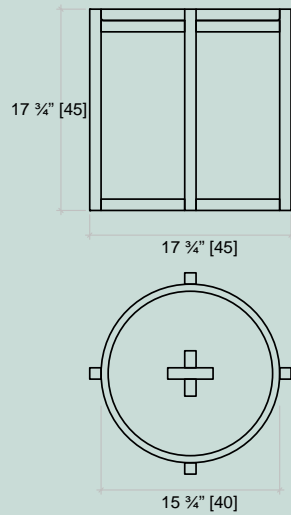
BOTON TABLE # 1



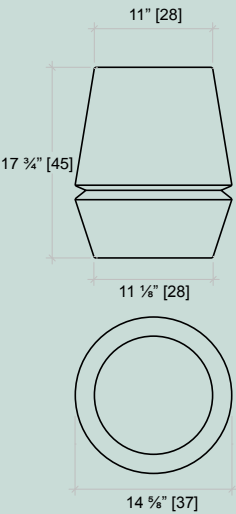
BOTON TABLE # 2



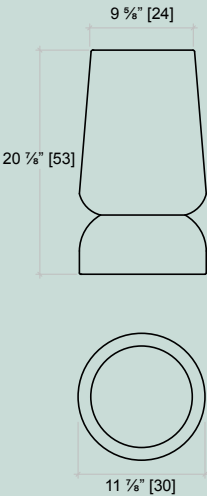
BOTON TABLE # 3



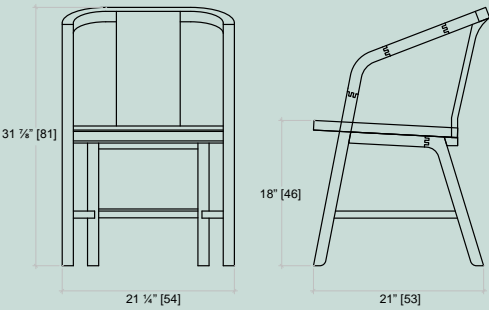
CAPIRUCHO STOOL



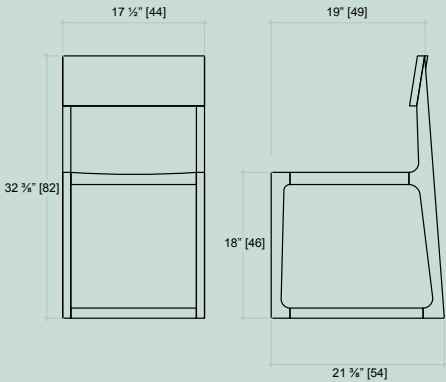
CAPIRUCHO TABLE



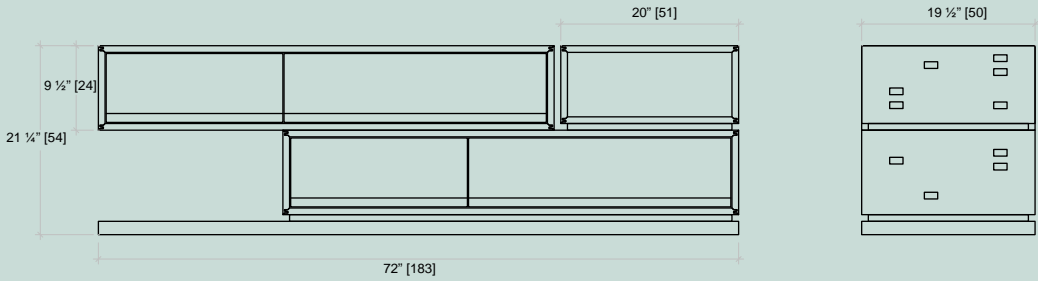
BASTON CHAIR



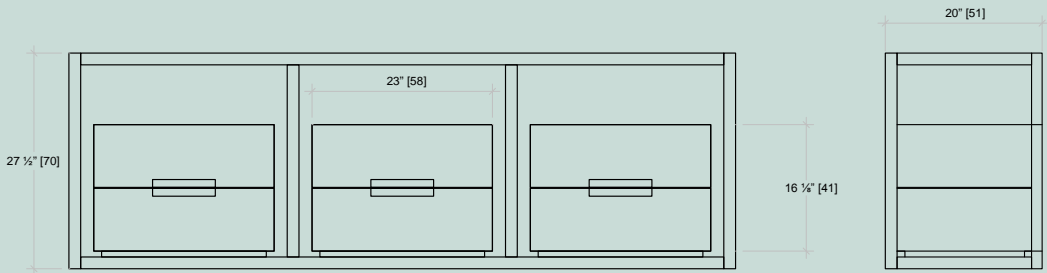
MASO CHAIR



DD CONSOLE

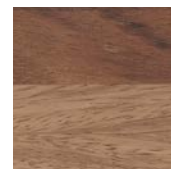


BODEGA CONSOLE

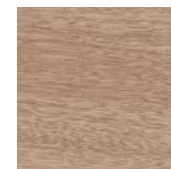




FINISHES
MATERIALS COLORS



CONACASTE



MATILISGUATE



PALO BLANCO



NEGRO PORO ABIERTO



HIGH GLOSS STEEL BLUE
RAL 5011



HIGH GLOSS WINE RED
RAL 3035



HIGH GLOSS PALE GREEN
RAL 6021



HIGH GLOSS SIGNAL ORANGE
RAL 2001



HIGH GLOSS OYSTER WHITE
RAL 1013



HIGH GLOSS AGATE GREY
RAL 7038



PEOPLE

Passion for design and Quality.

Lābrica, is a family owned business and is dedicated to the design and manufacturing of high quality contemporary furniture for the residential and hospitality markets. The company continues to create and grow the collection for the local and international markets and it also collaborates with clients world wide to design and build custom pieces achieving client's goals and vision.



Art Direction
Arrivillaga Basile Design Studio

Photography by
Arrivillaga Basile Design Studio

Thanks to
PALOROSA Project

